



Job 157004

the Shelby 3

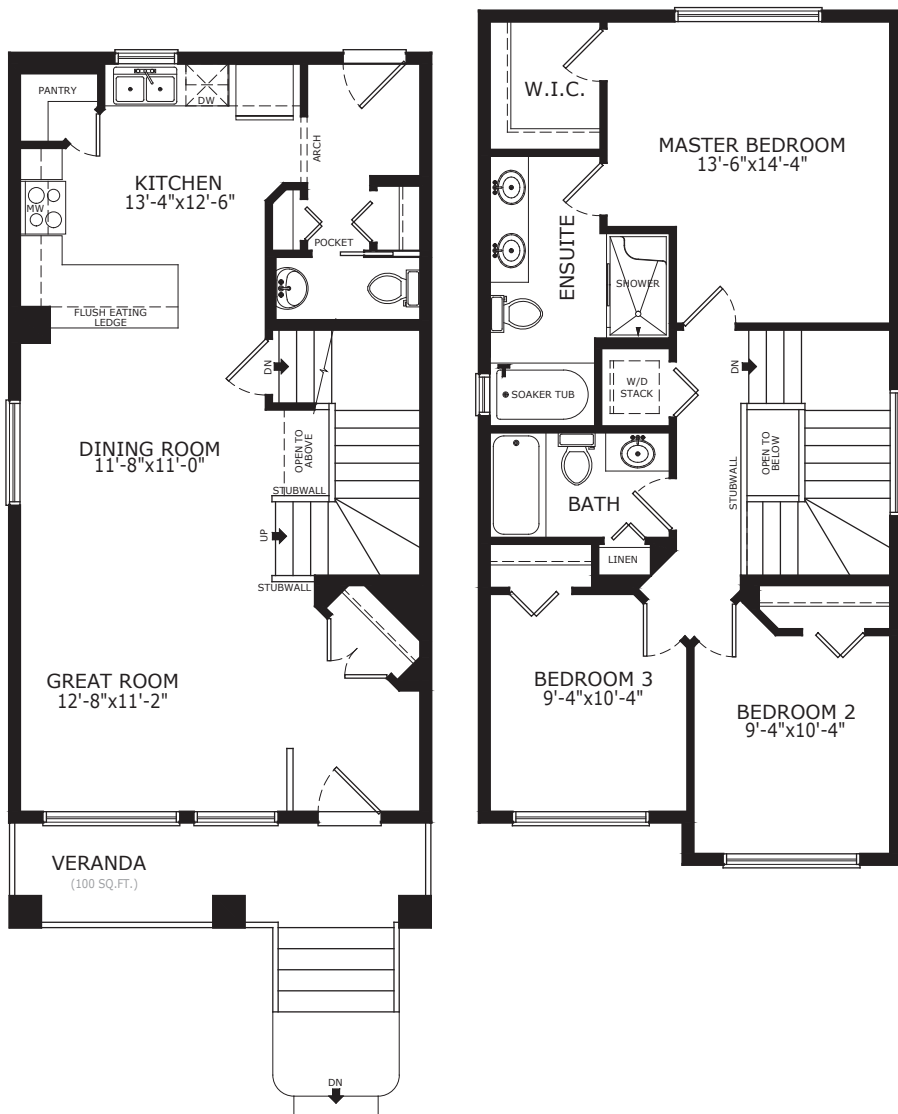
1416 sq.ft.



Shelby 3

126 Highview Gate, Airdrie

- East facing backyard
- Front veranda
- 3 bedrooms
- 9' main floor ceilings
- Stainless steel appliances
- Knockdown ceilings
- Quartz countertops with undermount sinks in kitchen, main bath and ensuite
- Walk-in pantry
- Mudroom
- Luxury vinyl plank (LVP) flooring on main floor, bathrooms and laundry
- Dual undermount sinks in 5 piece ensuite
- Upper floor laundry
- Soaker tub
- Master bedroom walk-in closet
- Back alley access



*See Sales Representative for area specific plans

© This plan is published by The Sterling Group of Companies. This elevation and floor plan are concept only and subject to change in features and specifications without notice. All rights reserved, including the rights of reproduction in whole or in part, in any form, without the permission of The Sterling Group of Companies. This display cannot be used for construction and does not form part of contract.

For more information please contact the Lanark Showhome
Ph: 403.981.1189 • Email: lanark@pacesetterhomes.com