



Job 157005

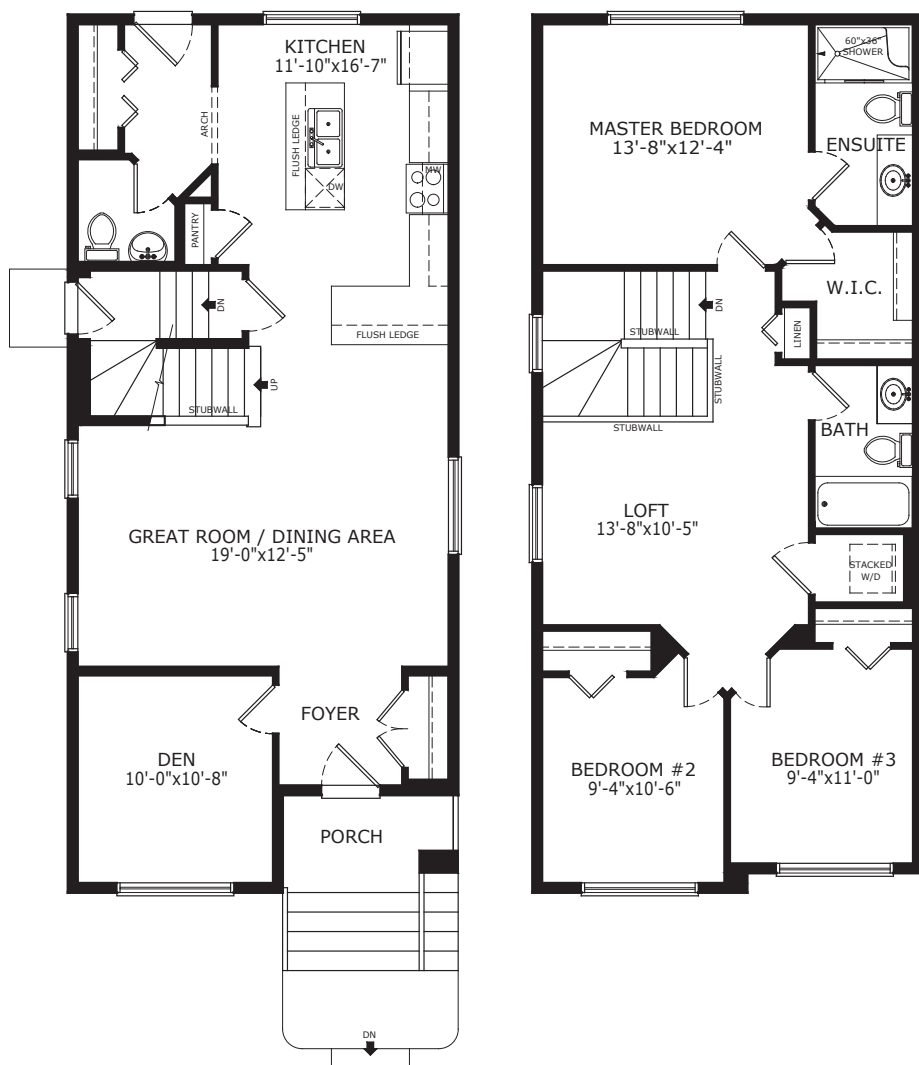
# the Copeland

1683 sq.ft.



## Copeland 124 Highview Gate, Airdrie

- East facing backyard
- Side entry
- 3 bedrooms
- 9' main floor ceilings
- Chimney hoodfan with built-in microwave
- Stainless steel appliances
- Knockdown ceilings
- Quartz countertops with undermount sinks in kitchen, main bath and ensuite
- Main floor flex room
- Luxury vinyl plank (LVP) flooring on main floor, bathrooms and laundry
- 3 piece ensuite
- Upper floor laundry
- Master bedroom walk-in closet
- Back alley access



A QUALICO® Company

\*See Sales Representative for area specific plans

© This plan is published by The Sterling Group of Companies. This elevation and floor plan are concept only and subject to change in features and specifications without notice. All rights reserved, including the rights of reproduction in whole or in part, in any form, without the permission of The Sterling Group of Companies. This display cannot be used for construction and does not form part of contract.

For more information please contact the Lanark Showhome  
Ph: 403.981.1189 • Email: lanark@pacesetterhomes.com