



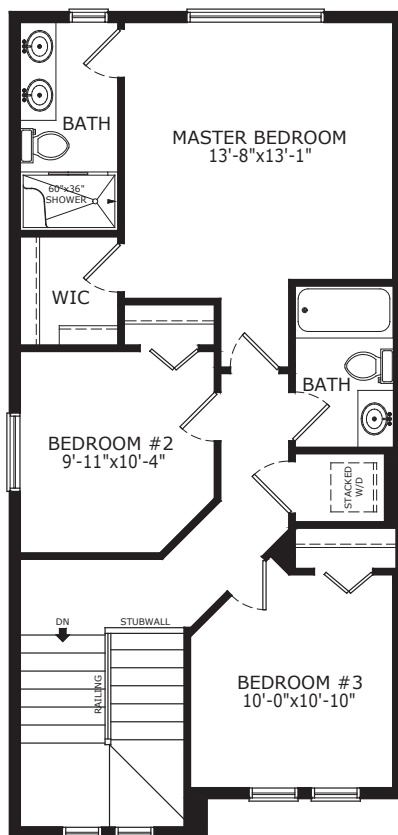
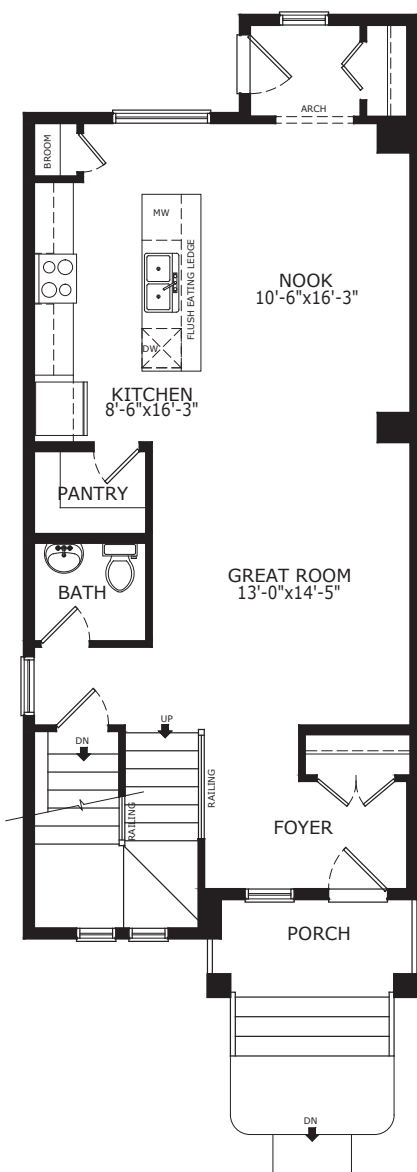
Job 6155

the Bristol  
1602 sq. ft.



## Bristol 173 Evanston Hill N.W.

- West facing backyard
- 3 bedrooms
- 9' main floor ceilings
- Built-in stainless steel appliances
- LVP on main floor
- Knockdown spantex ceilings
- Quartz countertops with undermount sink in kitchen, main bath and ensuite
- Corner pantry
- Mudroom
- 4 piece ensuite
- Master bedroom walk-in closet
- Railing



A QUALICO® Company

\*See Sales Representative for area specific plans

© This plan is published by The Sterling Group of Companies. This elevation and floor plan are concept only and subject to change in features and specifications without notice. All rights reserved, including the rights of reproduction in whole or in part, in any form, without the permission of The Sterling Group of Companies. This display cannot be used for construction and does not form part of contract.

For more information please contact the Evanston Showhome  
Ph: 403.265.2441 • Email: [evanston@pacesetterhomes.com](mailto:evanston@pacesetterhomes.com)