



# the Middleton 2

1421 sq.ft.

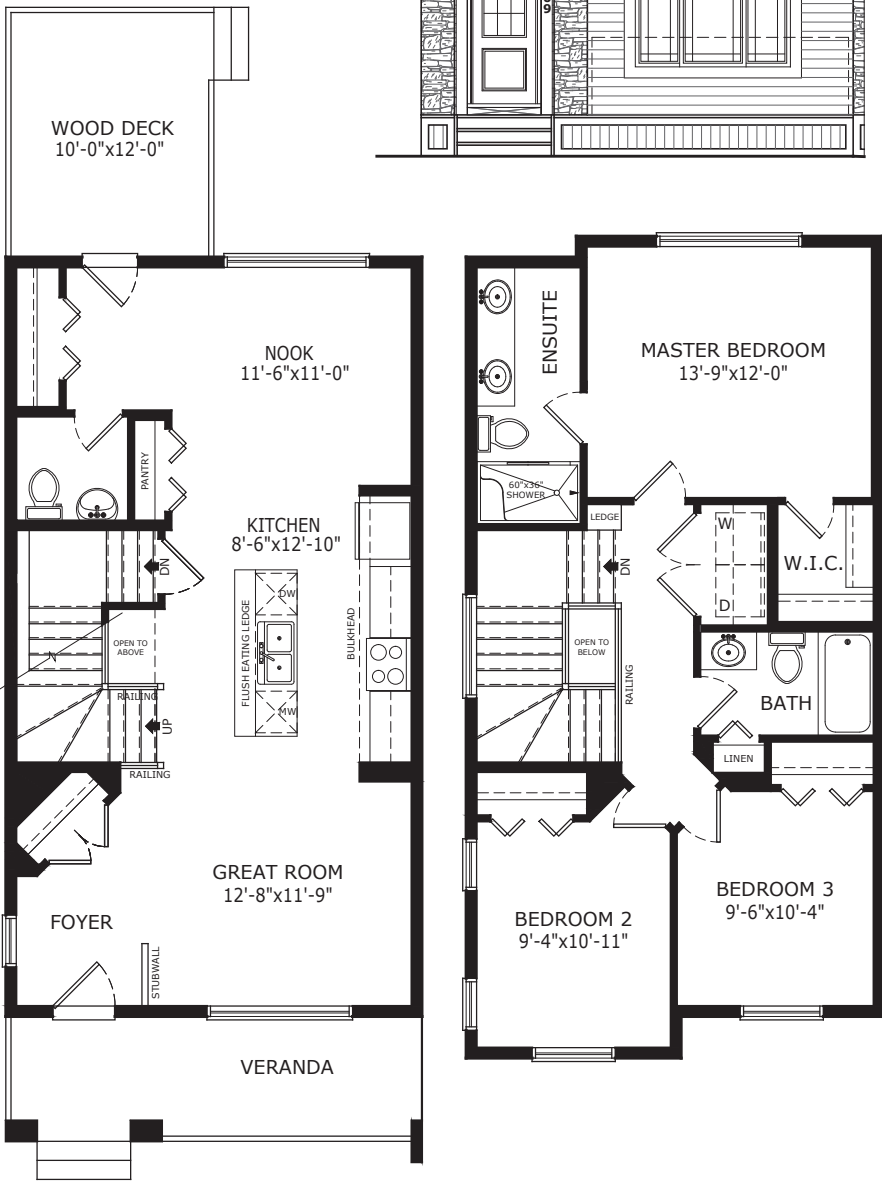
Job 6171



## Middleton 2

### 109 Evanston Hill N.W.

- West facing backyard
- 3 bedrooms
- 9 ft ceilings throughout
- Front veranda
- Builder's standard stainless steel appliances
- Granite or Quartz countertops in kitchen and ensuite
- Undermount kitchen sink
- Extra pots & pans drawer
- Knockdown ceilings
- Laminate on main floor
- Tile flooring in ensuite and upper main bathroom
- Upper floor laundry
- Shower and dual undermounts sink in ensuite
- Rear deck with privacy wall (10' x 12')



\*See Sales Representative for area specific plans

© This plan is published by The Sterling Group of Companies. This elevation and floor plan are concept only and subject to change in features and specifications without notice. All rights reserved, including the rights of reproduction in whole or in part, in any form, without the permission of The Sterling Group of Companies. This display cannot be used for construction and does not form part of contract.

For more information please contact the Evanston Showhome  
 Ph: 403.265.2441 • Email: [evanston@pacesetterhomes.com](mailto:evanston@pacesetterhomes.com)