



Job 67127

the Copeland

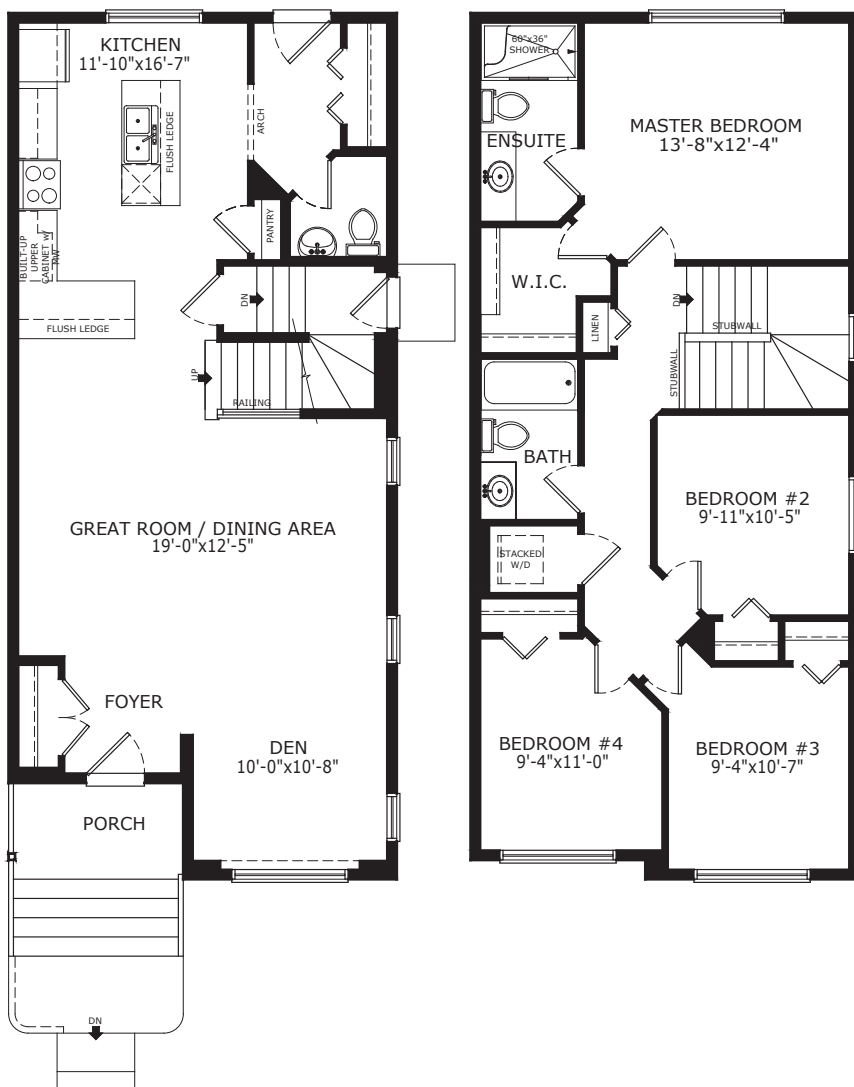
1683 sq.ft.



Copeland

207 Cornerstone Crescent NE

- Side entrance
- South facing
- 4 bedrooms
- 9' main floor ceilings
- Stainless steel appliances
- Waterline to fridge
- Gasline for stove
- Chimney hoodfan with built-in microwave
- Quartz countertops with undermount sinks in kitchen, main bath and ensuite
- Luxury Vinyl Plank (LVP) flooring throughout main floor, laundry and bathrooms
- Wood railing
- Knockdown ceilings
- Upper floor laundry
- 3 piece ensuite



A QUALICO® Company

*See Sales Representative for area specific plans

© This plan is published by The Sterling Group of Companies. This elevation and floor plan are concept only and subject to change in features and specifications without notice. All rights reserved, including the rights of reproduction in whole or in part, in any form, without the permission of The Sterling Group of Companies. This display cannot be used for construction and does not form part of contract.

For more information please contact the Cornerstone Showhome
Ph: 403.454.9718 • Email: cornerstone@pacesetterhomes.com