

HOME FEATURES

- Main Floor Flex Room
- Dedicated Mudroom with Walk-in Closet off Garage
- Open Concept Kitchen with Large Island and Walk-in Pantry
- Spacious Second Floor Bonus Room
- Centrally Located Upper Floor Laundry

See Area Manager for more information



MAIN 1158 SQ FT | UPPER 1536 SQ FT | TOTAL 2694 SQ FT

the Beaumont 2



Four Square



Colonial



Craftsman #1



Craftsman #2



Tudor

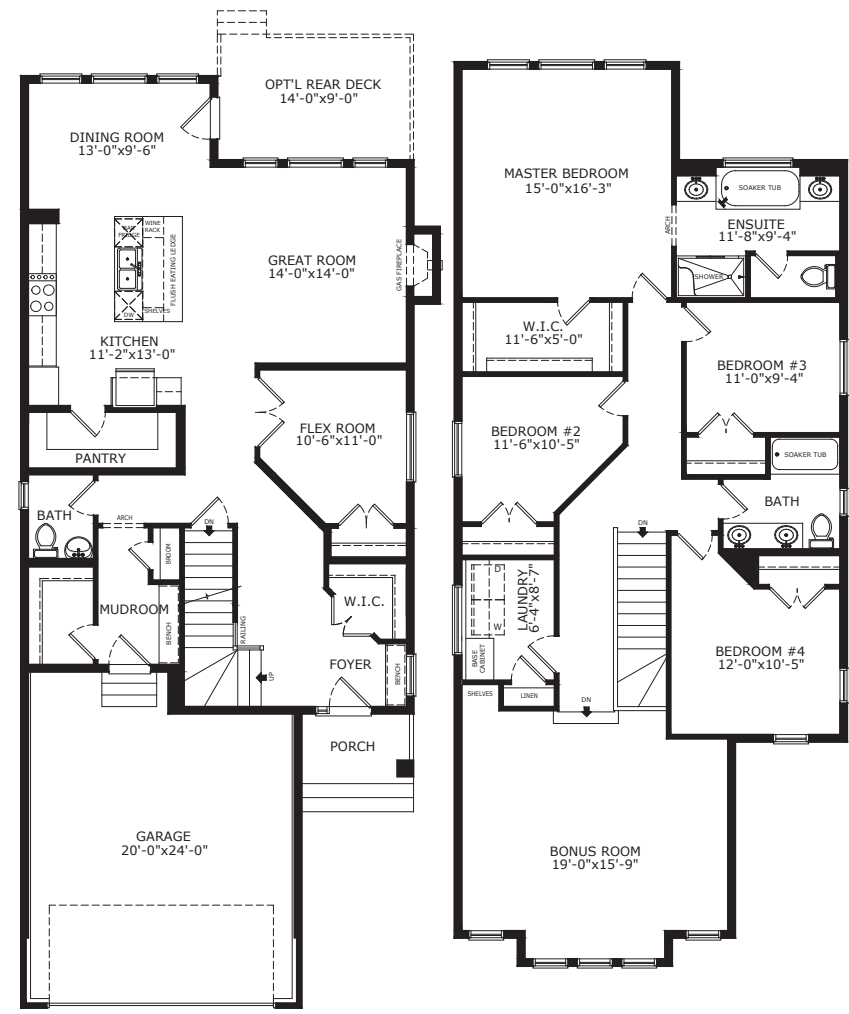
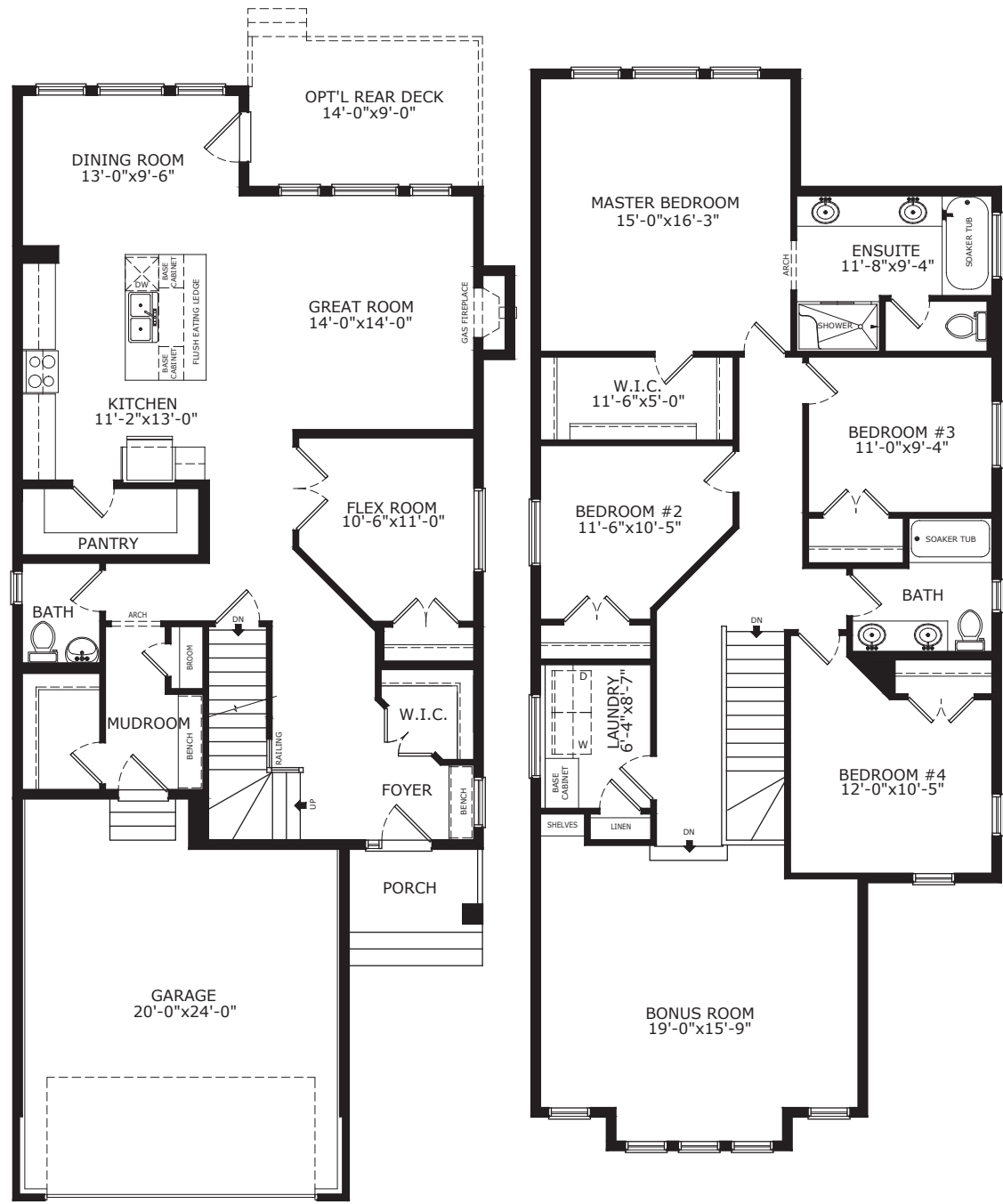


Contemporary



Modern Farmhouse

AVAILABLE PLAN OPTIONS



Optional Executive Kitchen Layout

Optional Ensuite



© This plan is published by The Sterling Group of Companies. This elevation and floor plan are concept only and subject to change in features and specifications without notice. All rights reserved, including the rights of reproduction in whole or in part, in any form, without the permission of The Sterling Group of Companies. This brochure cannot be used for construction and does not form part of contract.

Sterling
HOMES